

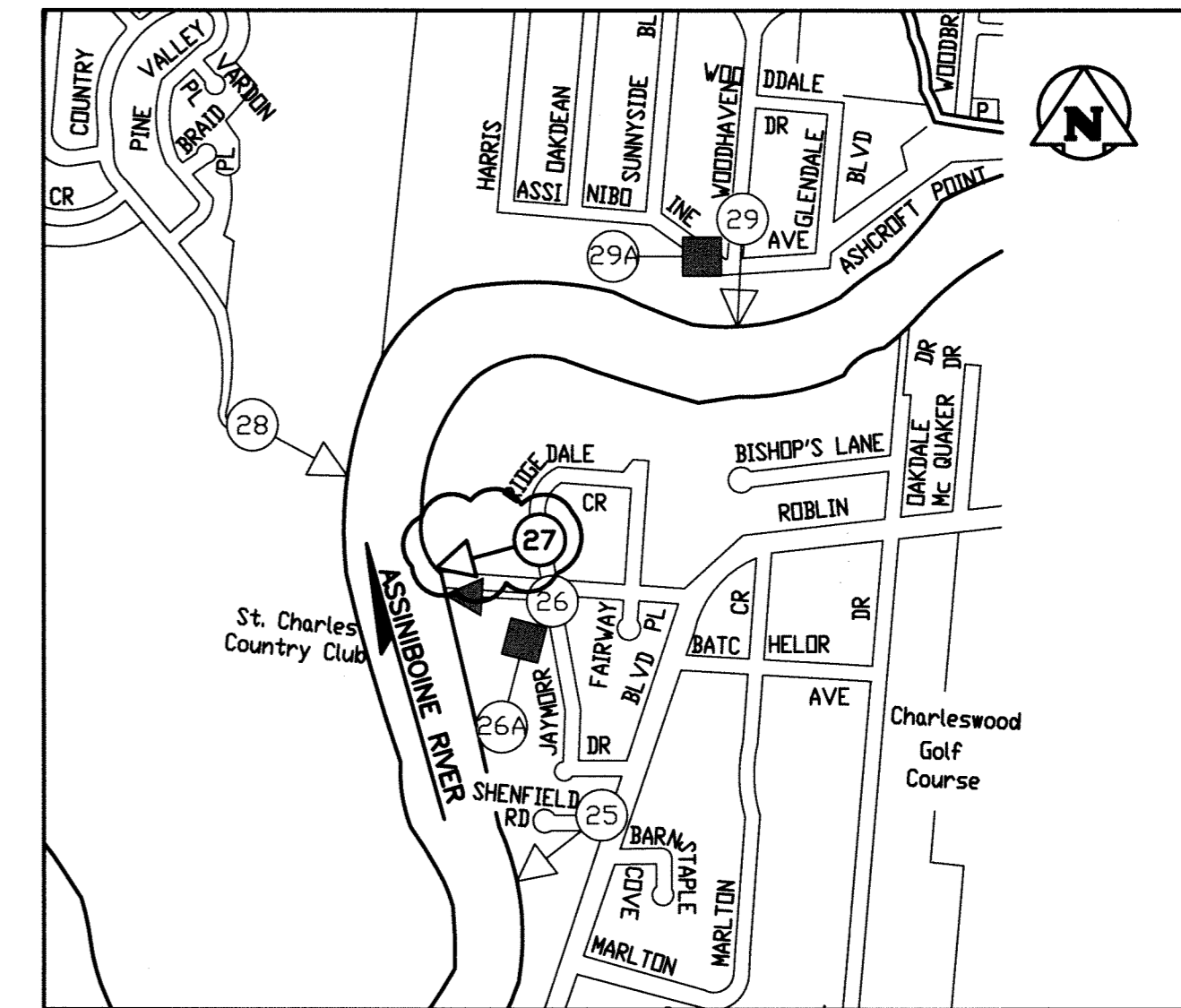


# THE CITY OF WINNIPEG

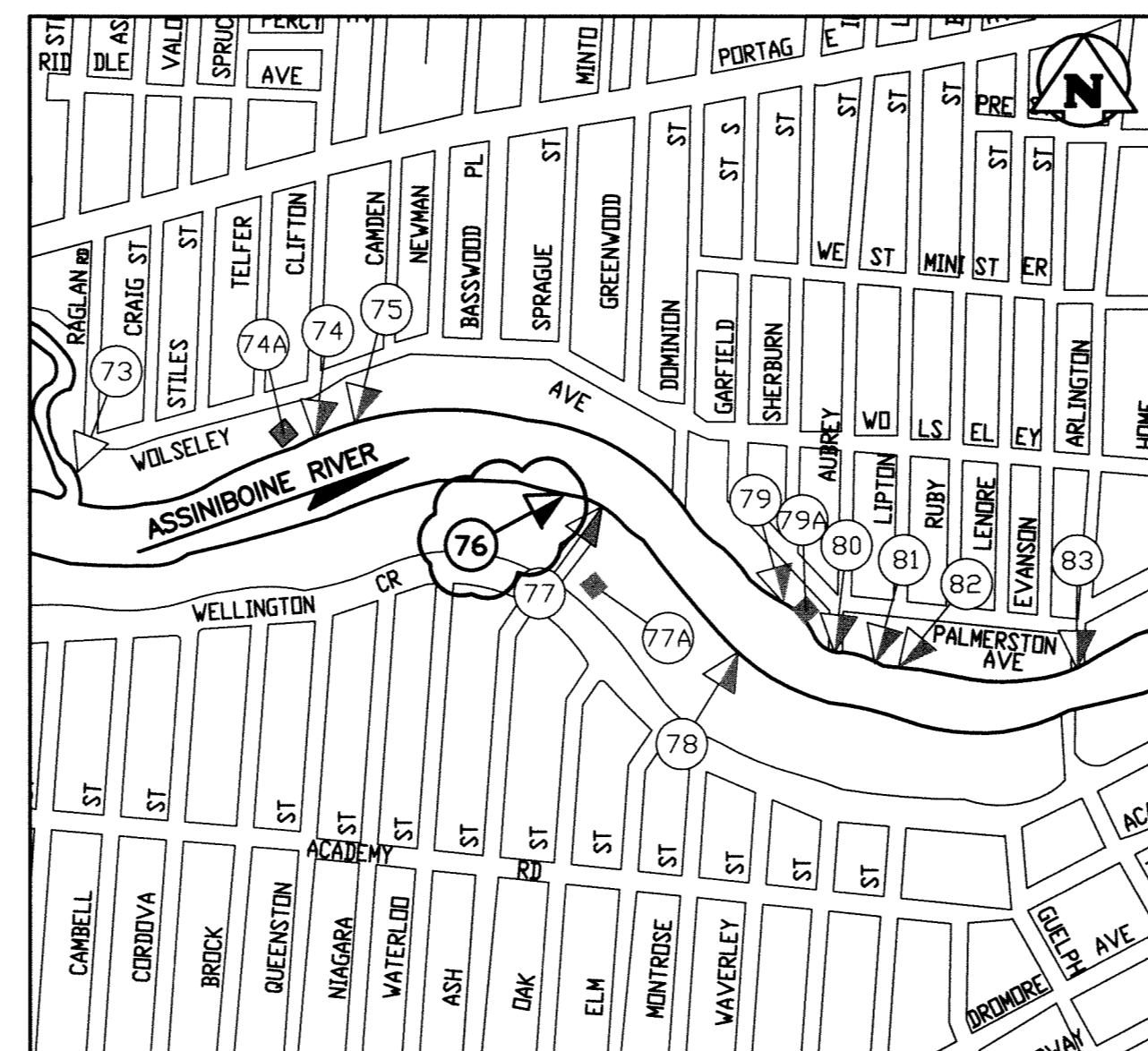
WATER AND WASTE DEPARTMENT

BID OPPORTUNITY NO. 1008-2011

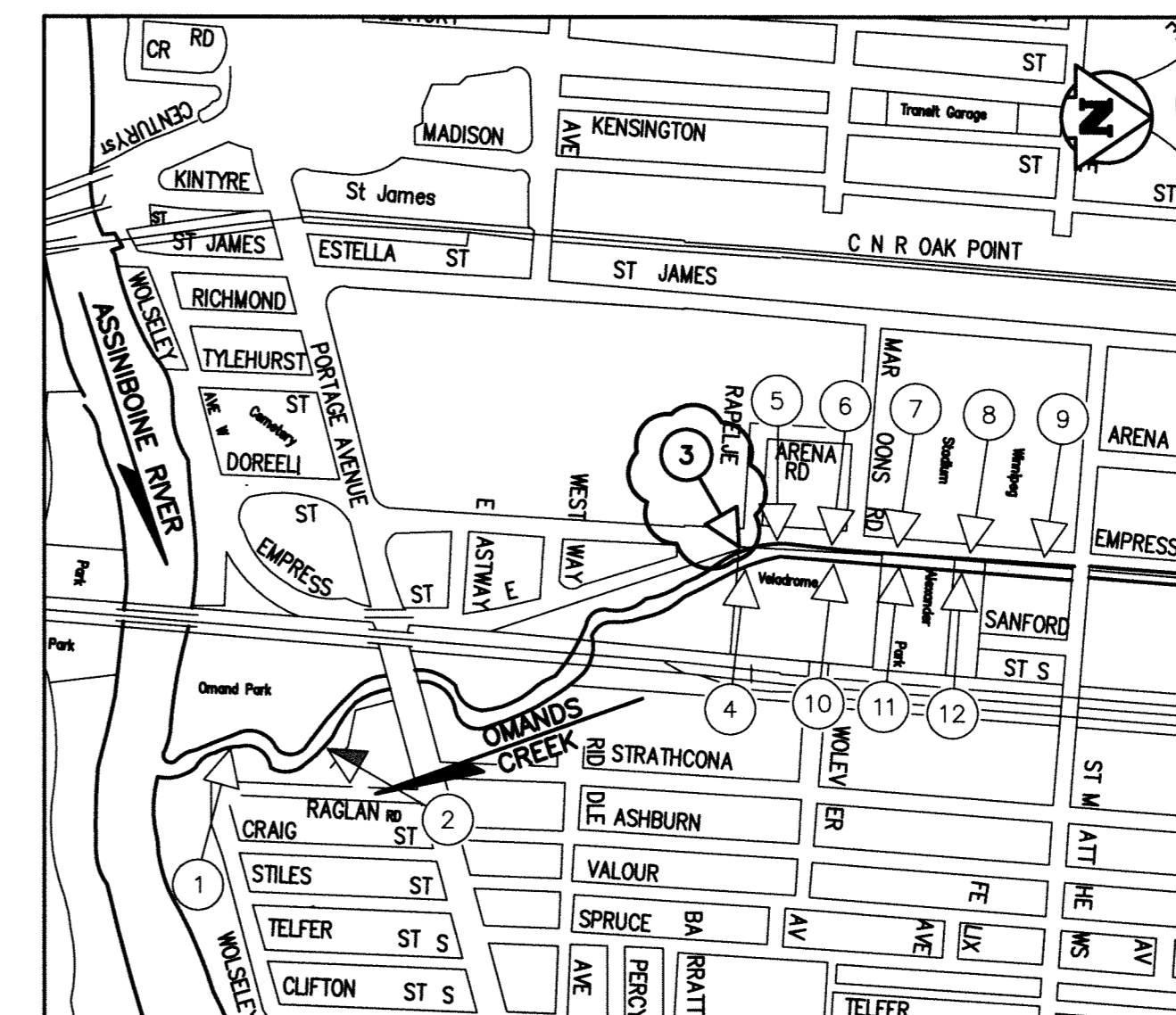
# 2012 Outfall Renewal/ Rehabilitation Program



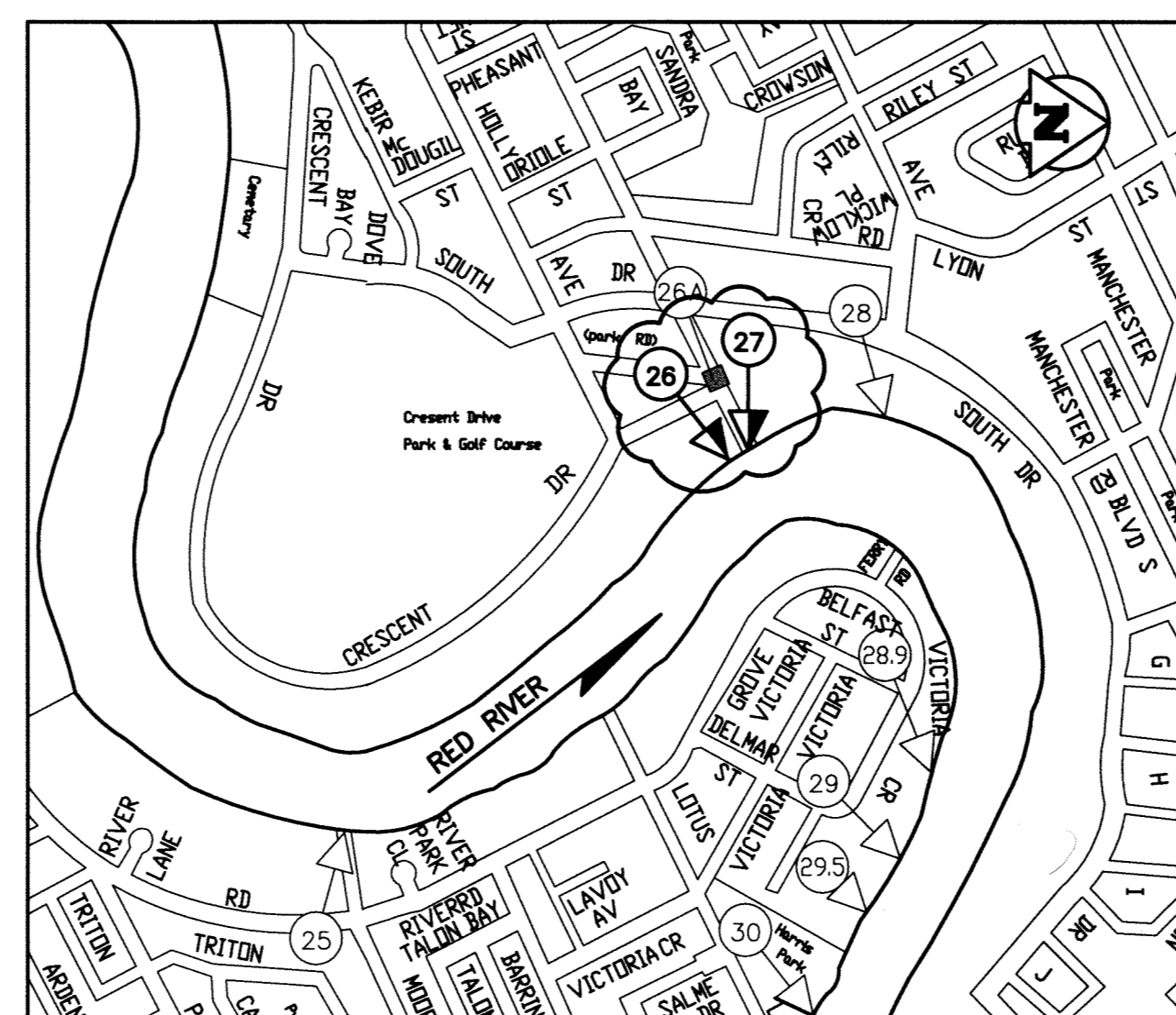
RIDGEDALE CRES. OUTFALL (AS-27)



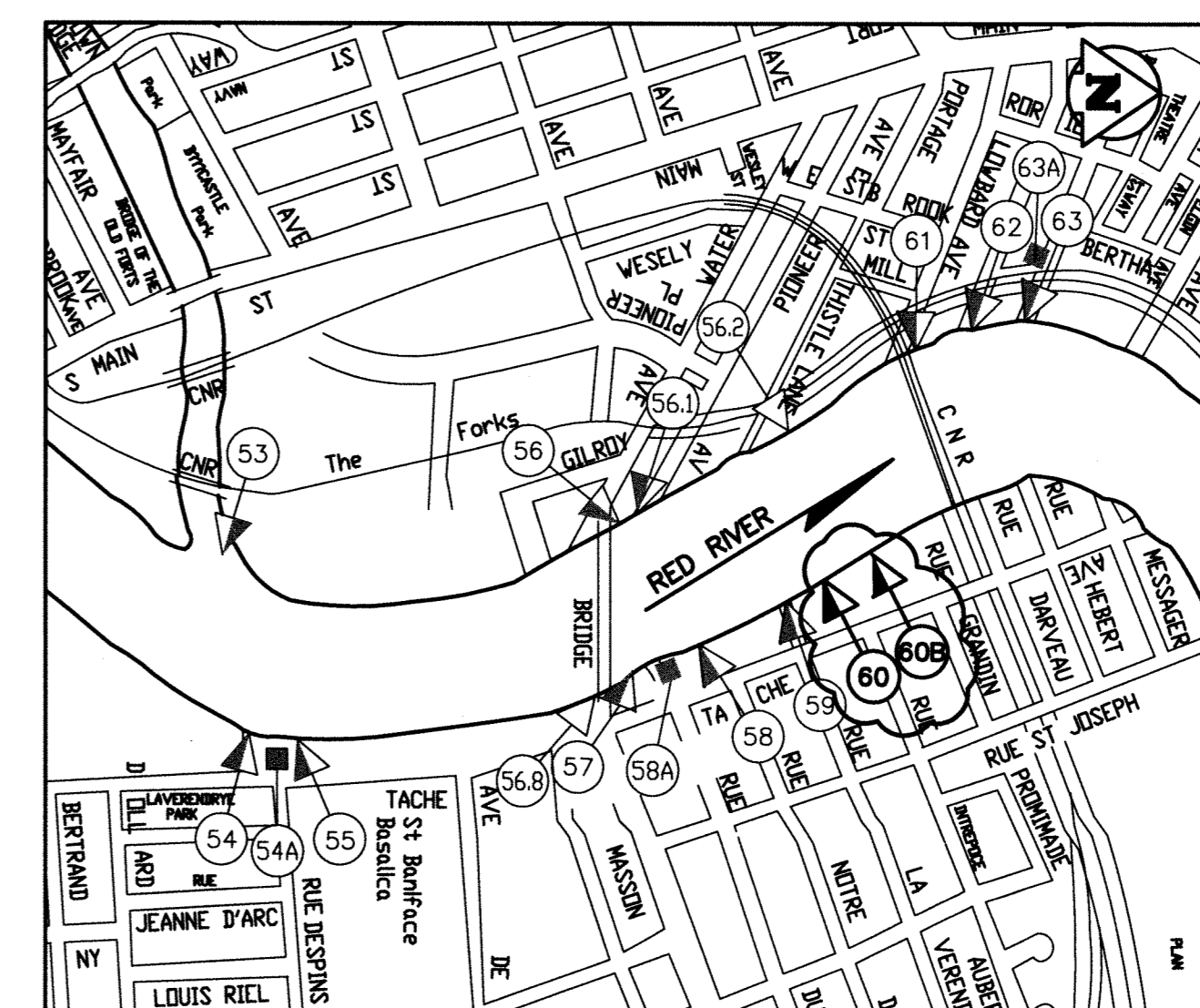
ASH ST. OUTFALL (AS-76)



EMPRESS ST. OUTFALL (OM-3)



CRANE AVE. OUTFALL (RR-26) & (RR-27)



RUE LAVERENDRE OUTFALL (RR-60 AND RR-60B)

DRAWING NO.	TITLE
	COVER SHEET
LD-5726	RIDGEDALE CRES. OUTFALL (AS-27) PLAN AND PROFILE
LD-5727	ASH ST. OUTFALL (AS-76) PLAN AND PROFILE
LD-5728	EMPRESS ST. OUTFALL (OM-3) PLAN AND PROFILE
LD-5729	CRANE AVE. OUTFALL (RR-26) PLAN AND PROFILE
LD-5730	CRANE AVE. OUTFALL (RR-27) PLAN AND PROFILE
LD-5731	RUE LAVERENDRE OUTFALLS (RR-60 AND RR-60B) PLAN AND PROFILE
LD-5732	MISCELLANEOUS DETAILS

LEGEND:

- 33 → LAND DRAINAGE (LDS)
- 58 → COMBINED SEWER OVERFLOW (CS)
- 34 → WASTEWATER OVERFLOW (WWS)
- 34 ■ LIFT STATION

RELEASED FOR CONSTRUCTION BY:

WATER & WASTE DEPARTMENT PROJECT ENGINEER

DATE: \_\_\_\_\_

FILE NO. P:\PROJECTS\2011\1-0107-33\DWG\MUN\COVER PLOT.DWG  
PLOT: 1:1 A

